

# Model SW-2044 Slim

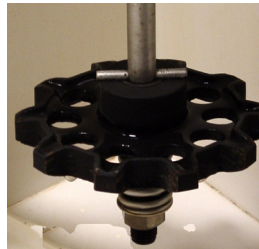


OS includes  
12" x 24" Filter Screen

The SW-2044 Slim sports a 20" diameter turntable with a tall 44" vertical capacity. This multi purpose machine will handle your small blocks and big blocks and up to a 44" vertical cylinder head capacity. The 2044 is equipped with a powerful 5 hp pump, and 23 nozzles fitted in a fully welded 1.50" manifold. Standard equipment includes a new designed agricultural style head rack and a standard automotive style adjustable head rack.



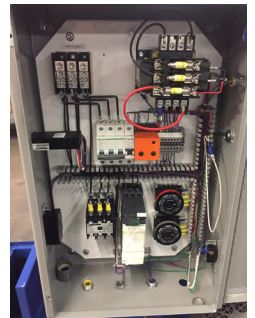
Rollout Turntable for easy load and unload  
Rollout Turntable and Cart is attached firmly to the door tracks to eliminate any chances of turntable tipping over due to top heavy



Gear driven turntable with spring loaded safety clutch engages in turntable that guarantees consistent turntable rotation within the spraychamber for a complete cleaning job.



All AXE Spraywashers include a fully protected electrical system to insure long life for your motors, switches, and heat system. AXE machines include a programmable 7 day timer for the heat source and a Digital Temperature controller for monitoring the heat.



A well designed spray manifold is a key component for good cleaning. The SW2044 slim uses large 1.50" diameter tubing with smooth radius style elbows in a 360 degree design inside the spray chamber for a non



**AXE Equipment**  
1040 n. Union  
Council Grove, KS 66846  
800-251-0018/fax 620-767-5482  
axeequipment@tctelco.net  
www.axeequipment.com

